

GLENN COUNTY RCD

Established in 1989, the Glenn County Resource Conservation District (RCD) provides leadership to help people conserve, improve, and sustain our natural resources, our environment, and our county's economic viability.

The Glenn County RCD:

- Promotes voluntary action to resolve natural resource issues;
- Focuses attention on local resource problems and opportunities;
- Develops and implements educational programs for the benefit of landowners;
- Provides input for the development and implementation of government programs;
- Coordinates with federal, state, and local agencies as needed for technical assistance.

People are the key to our success. Volunteers, whether serving on the district board or participating in a plant sale, are important because local people offer extensive expertise and personal interest regarding the best ways to take care of their own natural resources.



Effective management of natural resources at the local level reduces the need for outside intervention and regulation.

GOALS

Erosion control, flood control, and range management have been historic concerns of the RCD. Water quality issues around dairy farms and rice cultivation are increasingly important. Wetlands restoration, Integrated Pest Management projects, and landowner education are all vital issues in Glenn County. The RCD is a leader in securing the adoption and voluntary implementation of best management practices to enhance and sustain the natural resources of the county for the benefit of present and future residents of both the urban and rural areas.

Current specific goals include:

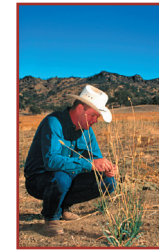
- Encouraging landowners to learn about improved stewardship practices;
- Encouraging communication between landowners and partner agencies;
- Improving the health of Stony Creek;
- Improving the health of rangeland;
- Improving dairy waste management;
- Improving integrated resource management on orchards through research and cooperation with landowners;
- Increasing the number of people who are practicing total resource management, conservation, and stewardship;
- Increasing opportunities for "value added" agriculture; and
- Increasing opportunities for wetlands conservation.

ACTIVITIES

The RCD has been active in many projects to reduce soil erosion, protect water quality, improve air quality, and control invasive weeds in the county. It has also sponsored several water quality education workshops for dairy producers, orchardists, and row crop farmers in the area.



One of Glenn County's valuable assets is Stony Creek, and about 90 percent of the creek lies within the county. To follow up a highly



successful effort in the Upper Stony Watershed that implemented practices to reduce soil erosion and sustain agricultural production, the RCD is planning a project for the Lower Stony Creek watershed with an emphasis on Arundo and Tamarix removal. The RCD also participates in the Stony Creek Advisory Committee, working to enhance riparian habitat and minimize bank erosion along Stony Creek.

The RCD encourages landowners to obtain technical assistance, participate in cost share conservation programs, attend workshops, and implement optimum management practices. It also works to tailor programs to meet local needs. Glenn County residents can call or visit the RCD office for assistance with natural resource questions or concerns.

WHAT IS AN RCD?

Resource Conservation Districts (RCDs) are “special districts” organized under the California Public Resources Code, Division 9. Each district has a locally elected or appointed volunteer board of directors made up of landowners in that district.

RCDs address a wide variety of conservation issues such as forest fuel management, water and air quality, wildlife habitat restoration, soil erosion control, conservation education, and much more.



The need for local leadership in natural resources management was one of the most important factors leading to the establishment of conservation districts nearly 60 years ago. Following the creation of the federal Soil Conservation Service, now the Natural Resources Conservation Service (NRCS), conservation districts were created throughout the country as a local focal point for coordinating and delivering technical assistance and funding to private land managers.

Over the years, federal, state and local governments have channeled assistance through conservation districts to address virtually every aspect of natural resource conservation. Districts have focused on setting priorities and carrying out programs based on local conditions and needs.

Glenn County RCD is an independent local state government liaison between federal government and local landowners.

Our basic function is to take available technical, financial, and educational resources and focus or coordinate them so that they meet the needs of local land users.

Our emphasis is on voluntary landowner participation and coordination of efforts of all involved partners.

GLENN COUNTY RESOURCE CONSERVATION DISTRICT

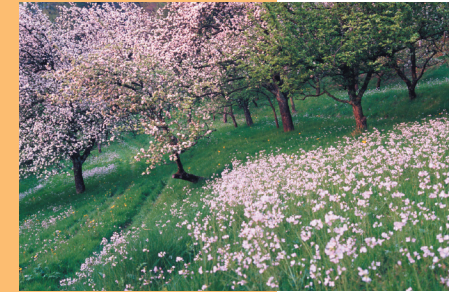
132 North Enright Avenue, Suite B
Willows, CA 95988

Phone: (530) 934-4601
Fax: (530) 934-8667

Our Mission:

To promote a sustainable, economically healthy county through the wise use of natural resources, maintain a desirable environment, and address local resource issues in a timely manner.

GLENN COUNTY RESOURCE CONSERVATION DISTRICT



PARTNERSHIPS

LANDOWNER
ADVOCACY

RESOURCE
CONSERVATION
PROJECTS



Glenn County RCD
(530) 934-4601