

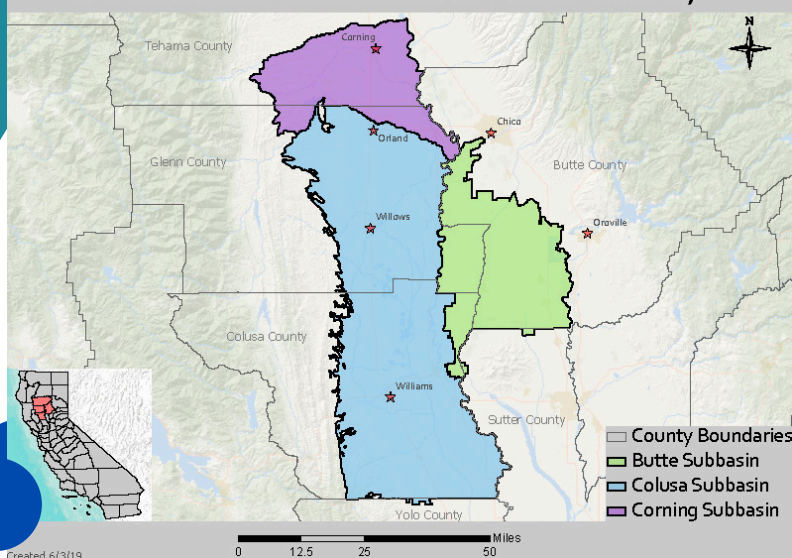
SGMA - Where do I start? Colusa / Glenn

SUSTAINABLE GROUNDWATER MANAGEMENT ACT

Beginning 2014, CA Law, SGMA, regulates the management and use of groundwater, especially in parts of the Sacramento Valley where overdraft and subsidence are significant issues.

Through the SGMA framework and locally led efforts, the goal is to protect groundwater resources for all beneficial uses and users over the long-term.

Groundwater Subbasins in Glenn County



PARTNERSHIPS ARE PRIORITY

Glenn Groundwater Authority

Colusa Groundwater Authority

Corning Sub-basin GSA

Community Alliance with Family Farmers

RCDs, Farm Bureaus, YOU!



GLENN COUNTY
RESOURCE CONSERVATION DISTRICT

MORE INFORMATION

530-701-6209

kellie@glenncountyrcd.org

www.glenncountyrcd.org

132 N Enright Ave., Ste C, Willows, CA

Ask for Kellie Burt!