



GLENN COUNTY PARTNERS BRING YOU PROGRAMS 101 FOR FARMERS & RANCHERS

FIRST EVENT COVER CROP PLANTING ... Year #3! FOR GROWERS & PARTNERS



FEATURING • Cover Crop Profiles • Species Composition • Roots YR-3 Data Results • The Slake Test • Water Infiltration • Timing

WHEN *THE NEW DATE!*

Tuesday, March 28, 2023 @ 9:30 am

WHERE via online Zoom or in-person

Glenn Success Square, 131 E Walker St, Orland, CA

RSVP SPACE LIMITED (BREAKFAST PROVIDED)

530.934.4601 x5 / kellie@glenncountyrcd.org QR Code >>

More Information & Sponsors >>>>>>> Scan Smart Phone

WWW.GLENNCOUNTYRCD.ORG



SECOND EVENT @ 10:30 am 10 MIN Presentations by Each Partner Followed by Open House, One-On-Ones

Come learn about local, state and federal funding opportunities to implement new management practices on YOUR FARM OR RANCH. The Resource Conservation District is bringing together the County's Department of Agriculture, Air Pollution Control District, USDA Natural Resources Conservation Service, USDA Farm Service Agency and UC Cooperative Extension-Glenn County to help you learn about cost-share funding opportunities and loan options! Programs include:

- ◆ Carl Moyer and FARMER Programs
- ◆ CDFA Healthy Soils Program & SWEEP
- ◆ CDFA Alternative Manure Management Program
- ◆ Farm Bill / Loan Programs: EQIP, CSP, RCPP, NAP, TAP
- ◆ And, more!

Your Partners will break programs down so you may learn what is available; then talk one-on-one with their technical advisors to create a plan, or not. It's worth exploring, right?!

This project was supported by the California Climate Investments' program through CDFA's Healthy Soils Program.



**GLENN COUNTY PARTNERS BRING YOU PROGRAMS 101
FOR FARMERS & RANCHERS
MARCH 28, 2023**

(5 min)
OPEN & WELCOME
Kandi Manhart-Belding, Executive Officer
Glenn County Resource Conservation District

(10 min each)
Glenn County Agriculture Department, Air Pollution Control District Programs: Carl Moyer and FARMER Programs
Gerald Peters, Environmental Compliance Specialist II
Glenn County Air Pollution Control District and CUPA

CDFA California Underserved and Small Producers (CUSP) Drought Relief Grant Program, administered by CARCD and CDFA Healthy Soils Program (HSP)
Kandi Manhart-Belding, Executive Officer
Glenn County Resource Conservation District

CDFA Alternative Manure Management Program (AMMP)
Betsy Karle, Area Dairy Advisor & County Director
UC Cooperative Extension-Glenn County

CDFA State Water Efficiency and Enhancement Program (SWEEP)
Kevin Greer, Mobile Irrigation Lab Manager
RCD of Tehama County

USDA Farm Bill / Loan Programs
Lyle Thompson, Engineer
USDA - Natural Resources Conservation Service

Katherine Lewis, Farm Loan Manager
USDA - Farm Service Agency

Elaine Gallegos, Farm Loan Officer
USDA - Farm Service Agency

(2 min)
CLOSE & THANK YOU
Kandi Manhart-Belding, Executive Officer
Glenn County Resource Conservation District

- ✓ Followed by One-on-One meetings for those who are interested in a particular program.
- ✓ Please remember to turn in your Programs 101 Individual Sign-In Sheet! Thank you 😊

Programs 101 Individual Sign-in Sheet

Tuesday, March 28, 2023
10:30 am
Glenn Success Square Conference
131 E Walker Street, Orland, CA

PLEASE RETURN TO GLENN COUNTY RCD STAFF AT THE END



Name of Individual _____

Name of Farm / Ranch _____

Phone Number _____ Check Here, if text messages are acceptable.

Email _____

Location of Potential Project:

>> Address _____

>> City _____

>> Zip Code _____

>> County _____

Estimated Project Acres _____

I am interested in learning more about the following programs or I'd like to implement this practice on my farm/ranch:



Carl Moyer & FARMER Grant Programs Year 2023

Glenn County Air Pollution Control District

Available Grant Programs for 2023

Voluntary Cost Share Programs

- **Carl Moyer Year 25 (2023):**

Application Period: January 1st- March 31st

Estimated \$175,000 to be awarded this year

- **FARMER: 22-23:**

Application Period: July 1- August 25th

Estimated \$700,000+ to be awarded this year



Carl Moyer

- **Guidelines: Carl Moyer 2017**
- **Typical Funding: ~50% or \$50,000 whichever is less**
- **Replacement Categories: Tractors (Orchard, Harvesters, Excavators, etc.), Stationary Diesel Engines (Pumps), Sprayers, Diesel Ag Trucks (Semi), and In Compliance Non-Ag Diesel Equipment**

Farmer

- **Guidelines: Both Carl Moyer 2017 & FARMER Guidelines**
- **Typical Funding: ~50% or \$50,000 whichever is less**
- **Replacement Categories: Tractors (Orchard, Harvesters, Excavators, etc.), Stationary Diesel Engines (Pumps), Sprayers, Diesel Ag Trucks (Semi), and Zero-Emission UTV's**

What's the difference?

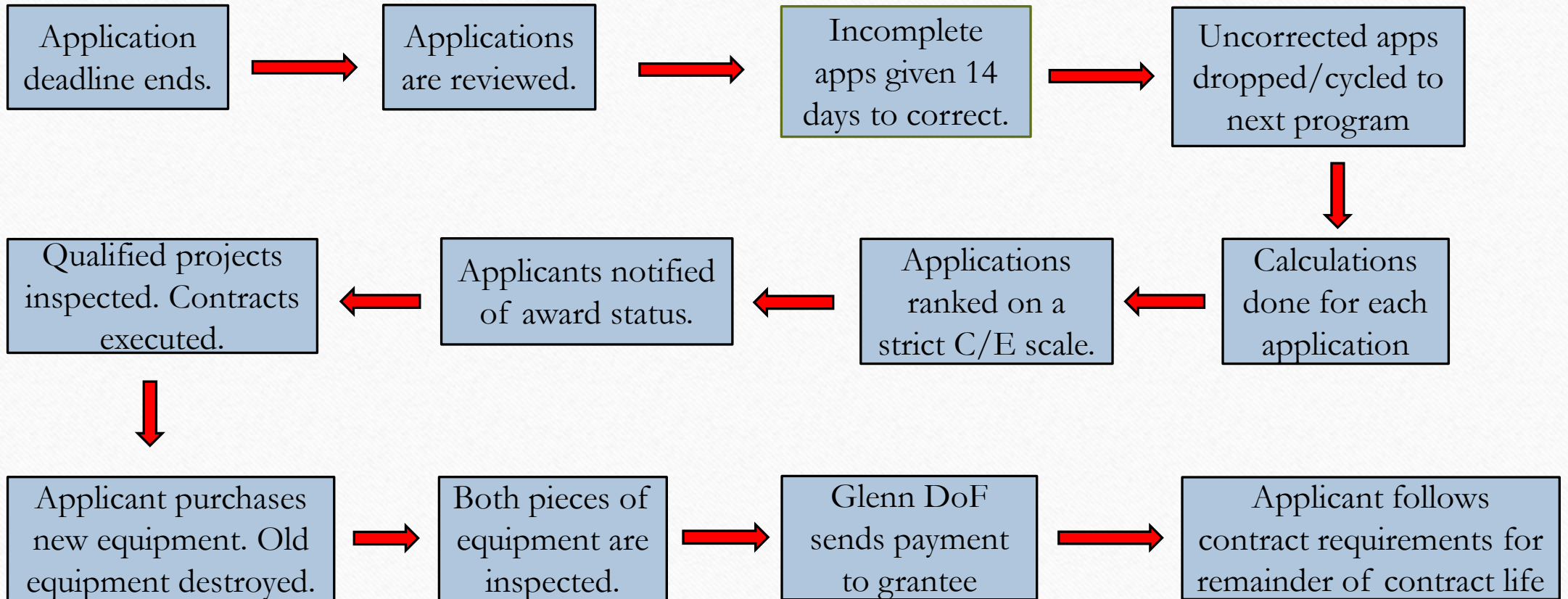
Carl Moyer

- 25th year of funding
- Replacement process usually complete by end of year
- In-compliance non-ag diesel equipment eligible
- Assembly Bill (AB) 1571

Farmer

- 6th year of Funding
- Replacement process may continue into following year
- Must meet definition of agricultural use as defined in guidelines
- Assembly Bill (AB) 134

Process Flow Chart



What do you need to apply?

1. Completed Application
2. In-Use Diesel Equipment (Cannot be inoperable)
3. The equipment has to be in compliance with all regulations and deadlines
3. Funding- For the rest of the cost
 - Can be either financed, or paid for by applicant
4. Quote- Provided by a dealership

Application Must Be Submitted Prior to Close of Business on the Deadline Date



Destruction Requirements

Minimum Requirements

- 3” **irregular** hole that encompasses the seam between the oil pan and engine block, a notch or cut through the equipment frame that prevents use under load (If equipment has a frame)
- The equipment must be rendered inoperable to the point it would not be cost effective to repair and reuse the equipment

Destruction Methods

- Cutting (torch, cutting wheel)
- Hole Punch (breaker bar, sledge, punch, drill)
- Crushing (Scrapyard, or DIY)
- Welding (Welding of Crankshaft or Pistons)

Frequently Asked Questions

- **Can I submit multiple pieces of equipment?**
- **How is the cost-effectiveness calculated?**
- **What does the \$50,000 number mean? Do I get that much just for applying? Is it always that much?**
- **Do I need to submit to both programs?**
- **Can I purchase used equipment?**
- **Can I use this program to replace Tier 1 and 2 stationary engines? Can I use this program to replace out of compliance heavy duty trucks?**
- **Can I buy a larger horsepower tractor? A different brand?**

Further questions?

- Call our office at 530-934-6500
- Email me: gpeters@countyofglenn.net
- Website: <https://www.countyofglenn.net/dept/agriculture/air-pollution-control-district/welcome>
- Applications available in our office, through email, or during the meet and greet

*All photos used are those taken by APCD Staff and are in no way an endorsement and used solely for educational purposes

California Department of Food and Agriculture (CDFA) California Underserved and Small Producers Drought Relief Grant, administered by CA Association of RCDs (CARCD)

- ✓ Target Audience: Smaller farms, and farmers from BIPOC, immigrant, and other socially-disadvantaged farmers and ranchers
- ✓ Award amounts of \$1,000 - \$20,000 per farmer
- ✓ Fall 2022 through Summer 2024;
applications can be submitted any time directly online to CARCD and are reviewed quarterly
- ✓ Producers may only receive CUSP funding every 12 months. CARCD will cross-check applicants with CDFA to ensure no repeat funds are awarded inside of that time period.



CALIFORNIA ASSOCIATION OF
RESOURCE
CONSERVATION DISTRICTS



California Department of Food and Agriculture (CDFA) California Underserved and Small Producers Drought Relief Grant, administered by CARCD – ELIGIBILITY

- ✓ Farmers must make at least \$10,000 and no more than \$400,000 in gross farm sales
- ✓ Agriculture must be the primary source of income
- ✓ At least 50% of funds will be awarded to socially disadvantaged farmers, immigrant farmers, and undocumented farmers. Socially disadvantaged farmer means a farmer who is a member of a socially disadvantaged group, these groups include all of the following: (1) African Americans (2) Native American Indians (3) Alaskan Natives (4) Hispanics (5) Asian Americans (6) Native Hawaiians and Pacific Islanders



CALIFORNIA ASSOCIATION OF
RESOURCE
CONSERVATION DISTRICTS



California Department of Food and Agriculture (CDFA) California Underserved and Small Producers Drought Relief Grant, administered by CARCD – WHAT'S COVERED

- ✓ Production / planting expenses
- ✓ Water cost increases, including water delivery
- ✓ Electricity cost increases
- ✓ Emergency upgrades to irrigation systems
- ✓ Well equipment installation & emergency upgrades
- ✓ Drilling of new wells or repairs on existing wells that are the sole source of water for an operation and approved through local GSA as per Governor's Office moratorium regulation

NOT COVERED: Upgrading to a larger pump that will draw more water



CALIFORNIA ASSOCIATION OF
RESOURCE
CONSERVATION DISTRICTS



California Department of Food and Agriculture (CDFA) California Underserved and Small Producers Drought Relief Grant, administered by CARCD – HOW TO APPLY

- ✓ Complete application online at <https://carcd.org/our-work/project/cusp/>
- ✓ Available in English, Spanish, Punjabi, Mandarin, Lao and Hmong
- ✓ Contact Glenn County RCD for technical assistance



**<<< QR Code
Scan Smart Phone**



CALIFORNIA ASSOCIATION OF
RESOURCE
CONSERVATION DISTRICTS





Healthy Soils Program

CDFA OFFICE OF ENVIRONMENTAL FARMING & INNOVATION

What is the CA Healthy Soils Program?

The Healthy Soils Program stems from the California Healthy Soils Initiative, a collaboration of state agencies and departments to **promote the development of healthy soils on California's farmlands and ranchlands.**

The HSP has three components: the **HSP Incentives Program**, the **HSP Demonstration Projects**, and the ***NEW* HSP Block Grant Pilot Program**. The HSP Incentives Program provides financial assistance for implementation of conservation management that improve soil health, sequester carbon and reduce greenhouse gas (GHG) emissions. The HSP Demonstration Projects showcase California farmers and rancher's implementation of HSP practices. The HSP Block Grant Pilot Program – TBD.

2023 Program Timeline – UNKNOWN but here is an example

Item	Timeframe
Program framework public comment period	Sep 23 – Oct 23, 2019
Draft RGA for public comment period	Nov – Dec 2019
Training of HSP technical assistance providers	Jan 2020
Release of RGA	Late Jan/Early Feb 2020
Grant Applications Due	March 2020
Review Process	TBD, 2020
Announce Awards	TBD, 2020

* Subject to change.

Healthy Soils Program Incentives Program

The HSP Incentives Program provides **financial incentives** to California growers and ranchers to implement conservation management practices that **sequester carbon, reduce atmospheric greenhouse gases (GHGs), and improve soil health.**

GHGs benefits are estimated using quantification methodology and tools developed by California Air Resources Board (CARB), USDA-NRCS and CDFA and soil health improvement will be assessed by measuring soil organic matter content.

Healthy Soils Program Incentives Program

- Est. to be “rolling” application bases; applications will be reviewed and scored in the order they are submitted.
 - Apply early!
 - HSP available until funds expended.
- Est. maximum grant \$100,000.
- Est. Life of Practice is 3 Years; Woody Cover 10 Years.
- Est. Cost Sharing is not a requirement, but encouraged.
- Est. to include Whole Orchard Recycling.

This May Change

All eligible practices are divided into the categories below:

See handout in folder!

I. Soil Management Practices on Annual and/or Perennial Croplands

- Cover Crop (USDA NRCS CPS 340)
- Conservation Crop Rotation (USDA NRCS CPS 328)
- Mulching (USDA NRCS CPS 484)
- Nutrient Management (USDA NRCS CPS 590) (15% reduction in fertilizer application only)
- Residue and Tillage Management – No-Till (USDA NRCS CPS 329)
- Residue and Tillage Management – Reduced Till (USDA NRCS CPS 345)
- Strip Cropping (USDA NRCS CPS 585)

I. Soil Management Practices on Annual and/or Perennial Croplands, Continued

- Compost Application Practices

 - Compost Application to Annual Crops

 - Compost Purchased from a Certified Facility

 - On-farm Produced Compost

 - Compost Application to Perennials, Orchards and Vineyards

 - Compost Purchased from a Certified Facility

 - On-farm Produced Compost

- Whole Orchard Recycling

II. Herbaceous Cover Establishment on Croplands

- Conservation Cover (USDA NRCS CPS 327)
- Contour Buffer Strips (USDA NRCS CPS 332)
- Field Border (USDA NRCS CPS 386)
- Filter Strip (USDA NRCS CPS 393)
- Forage and Biomass Planting (USDA NRCS 512)
- Grassed Waterway (USDA NRCS CPS 412)
- Herbaceous Wind Barrier (USDA NRCS CPS 603)
- Riparian Herbaceous Cover (USDA NRCS CPS 390)
- Vegetative Barriers (601) (USDA NRCS CPS 601)

III. Woody Cover Establishment on Croplands and/or Grazing Lands

- Alley Cropping (USDA NRCS CPS 311)
- Hedgerow Planting (USDA NRCS CPS 422)
- Multi-story Cropping (USDA NRCS CPS 379)
- Riparian Forest Buffer (USDA NRCS CPS 391)
- Tree/Shrub Establishment (USDA NRCS CPS 612)
- Windbreak/Shelterbelt Establishment (USDA NRCS CPS 380)

IV. Grazing Lands (Grasslands, Rangelands and/or Pastures)2

- Compost Application to Grassland
 - Compost Purchased from a Certified Facility
 - On-farm Produced Compost
- Prescribed Grazing (USDA NRCS CPS 528)
- Range Planting (USDA NRCS CPS 550)
- Silvopasture (USDA NRCS CPS 381)

<https://www.cdffa.ca.gov/oefi/healthysoils/>

Again, This May Change



**<<< QR Code
Scan Smart Phone**



March 28, 2023

University of California Cooperative Extension

BETSY KARLE

COUNTY DIRECTOR & DAIRY ADVISOR

UNIVERSITY OF CALIFORNIA
Agriculture and Natural Resources

ABOUT UCCE

Division of University of California –
1862 Land-Grant University
Research – Education – Extension

“Extend information developed at the University of California to enhance quality of life and the environmental and economic well-being of the citizens of California through research and education” – University of California Cooperative Extension Mission

HOW CAN WE HELP YOU?

Through an agreement with CDFA:

- Technical Assistance for Growers & Ranchers in applying for:
 - Statewide Water Efficiency & Enhancement Program (AMMP)
 - Healthy Soils Program (HSP)
 - Alternative Manure Management (AMMP)
- Encourage & Promote Climate Smart Agriculture Practices
 - Soil health
 - Compost management
 - Irrigation & nitrogen fertilizer efficiency management practices



Alternative Manure Management Program

CDFA OFFICE OF ENVIRONMENTAL FARMING & INNOVATION

UNIVERSITY OF CALIFORNIA
Agriculture and Natural Resources

PROVIDING ASSISTANCE



10 Community Education Specialists Working with Local Cooperative Extension Advisors

- Sonoma
- Glenn
- Yolo
- Ventura
- San Diego
- Yuba-Sutter
- Imperial
- Merced
- Fresno
- Kern



2023 ALTERNATIVE MANURE MANAGEMENT PROGRAM (AMMP)

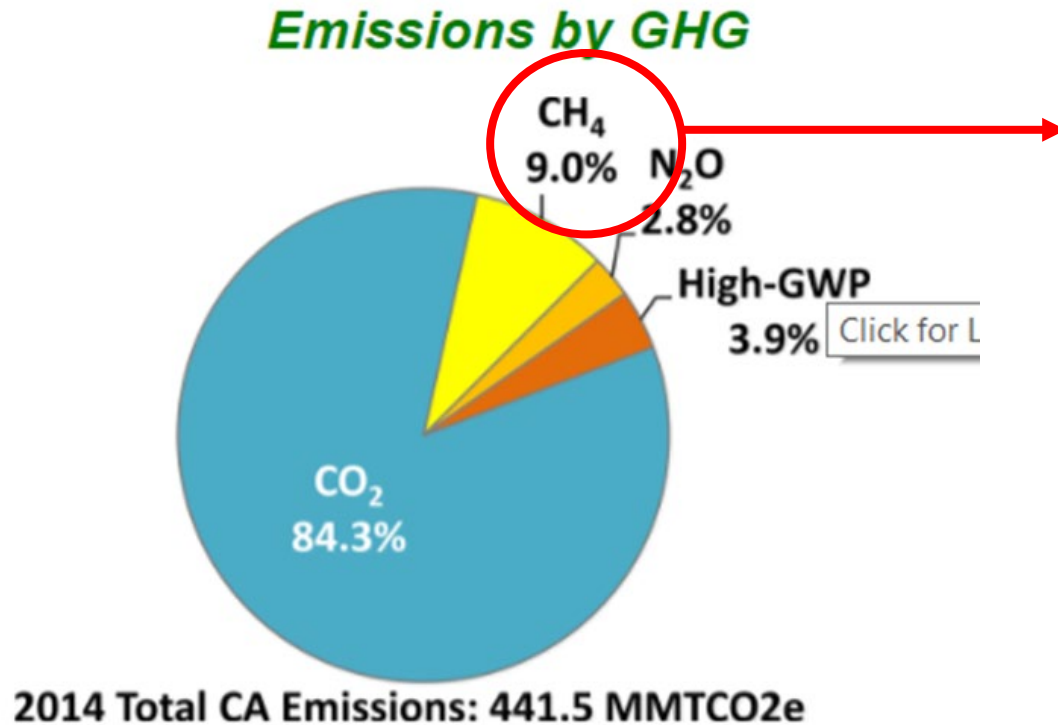
- COMPETITIVE grant through the California Department of Food and Agriculture (CDFA)
- Award funds to dairy and livestock operations to implement alternative manure management practices that reduce methane emissions.
- Since 2017, 4 rounds have been completed
 - 114 incentive projects
 - \$68.3 million
 - 1.1 MMTCO₂e over 5 years (CDFA)



Alternative Manure Management Program

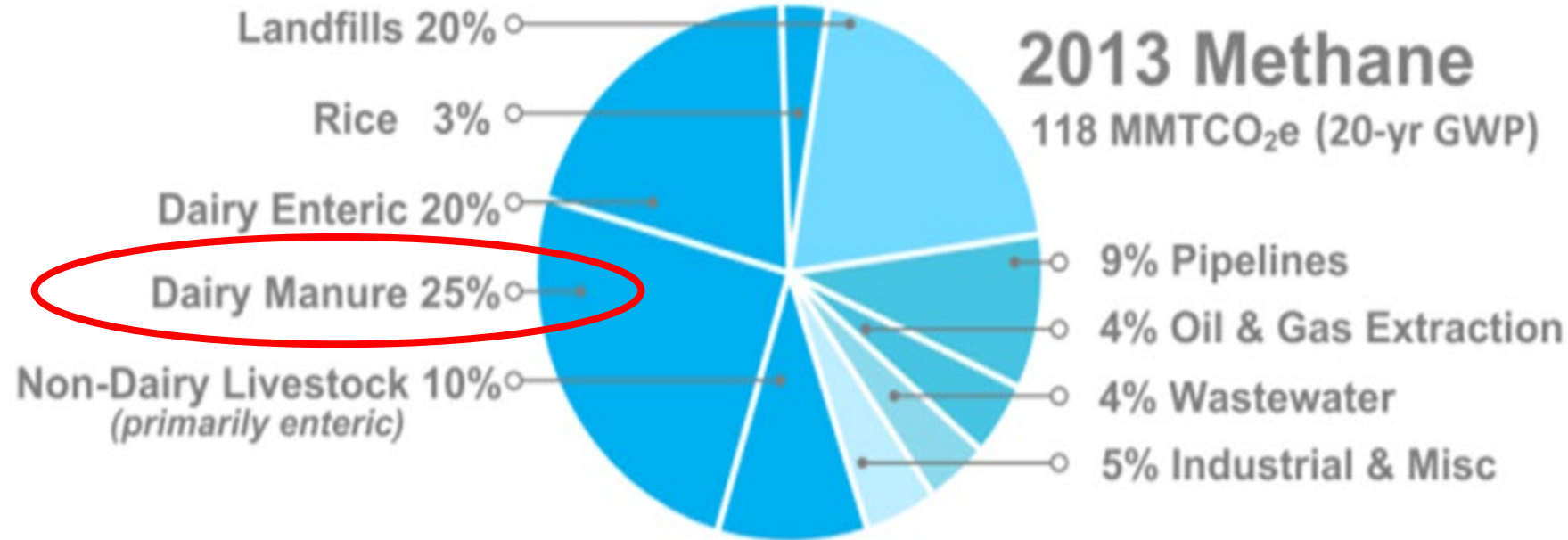
CDFA OFFICE OF ENVIRONMENTAL FARMING & INNOVATION

Who cares about methane?



- Methane (CH₄) – 25x more global warming potential than CO₂
- 59% of CH₄ comes from Ag sources (primarily from manure + enteric fermentation)

Who cares about methane?

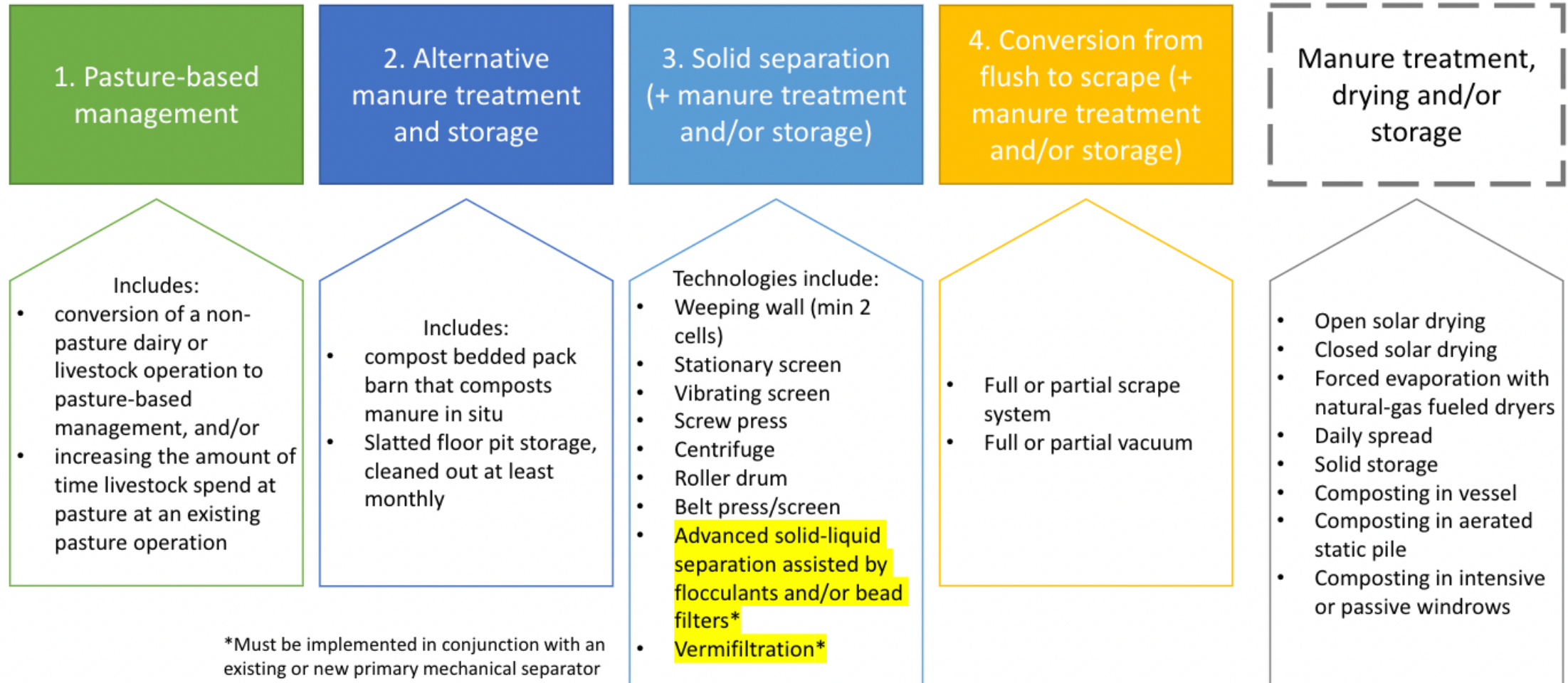


REMOVING VOLATILE
SOLIDS FROM THE
LIQUID WASTE STREAM
REDUCES METHANE
PRODUCTION.



Jeff Vanuga/USDA/NRCS

Eligible Projects - Subject to Change



*Must be implemented in conjunction with an existing or new primary mechanical separator

Grant Details & General Timeline

- No opening solicitation date has been announced
 - Expecting grant to open in May/June 2023*
- If so, applications would be due July/August*
- \$750,000 max funding
- 2-year project duration



Dairy PLUS+ Programs

- Supplemental funding available for matching funds through the Dairy Plus+ Program
 - Partnership between California Dairy Research Foundations (CDRF) & California Department of Food & Agriculture (CDFA)
 - Application assistance is available through UCANR

Potential Projects for Funding Include:

- Vermifiltration
- Polymer Flocculant-based Solids/Liquids Separation
- Algae Raceways with a Moving Bed Biofilm Reactor
- Evaporative Liquid Waste Processing Systems
- Subsurface Drip Fertigation Using Liquid Manure
- Weeping Walls
- Aerated Static Composting
- And others (complete list available soon)



UCANR/CDFA Climate Smart Agriculture Partnership

Contact **Lizzeth Mendoza** for more
information & assistance on
completing the grant at **NO COST!**

LIZZETH MENDOZA
LTHMENDOZA@UCANR.EDU
(530) 517-8187

UNIVERSITY OF CALIFORNIA
Agriculture and Natural Resources

State Water Efficiency and Enhancement Program (SWEET)

Presented by the RCD of Tehama
County



CALIFORNIA DEPARTMENT OF
FOOD AND AGRICULTURE



About the Program

- A grant application process administered by the California Department of Food and Agriculture (CDFA)
- \$100 M (approximately) for the year 2023
- Purpose is to increase water use efficiency and reduce greenhouse gas (GHG) emissions



Project Types

- Improved irrigation water management
- Soil, Weather, Plant Sensors
- Micro-irrigation
- Improved energy efficiency - Pump replacement or retrofit
- Fuel conversion – Including renewable energy installations
- Variable frequency drives
- Low pressure systems
- Reduced Pumping
- Other projects that combine water savings and GHG reductions

Solar



Micro Systems



Flow Meters



Weather Stations



Funding, Duration & Dates

- \$100 million available
 - 2021 not to exceed \$200,000
 - 2023 ???
- Project Duration:
 - 2021, 24 months
 - 2023, ???
- Opening date
 - Spring? April? Summer/fall?

Soil Moisture Monitors



Variable Frequency Drives



2021 Program Qualifications

- Must have a combined project that:
 - Decreases GHG at the pump
 - *New pump*
 - *Convert diesel to electric*
 - *Add solar*
 - *Retrofits*
 - Increase water use efficiency
 - *Convert system type*
 - *Replace old system*
 - *Add technology*
- Need to have irrigated in the prior year
- Need energy/fuel receipts from prior year

Pump Replacement



Automation



2021 Program Requirements

- Must have a pump efficiency test
 - No more than 1 year old
 - Contact local pump/irrigation company
- Need quotes on project costs
 - Costs & Labor
 - Labor less than 25% of total cost
- Solar quotes must be included in application
- Must install flow meter

Program Restrictions

SWEEP grant funds cannot be used to:

- Expand existing agricultural operations (i.e., additional new acreage cannot be converted to farmland)
- Install new groundwater wells or increase well depth
- Test experimental technology or perform research
- Pay for engineering costs associated with the project design, development and planning
- Purchase tools and equipment with a useful life of less than two years

The logo features a black silhouette of a hand holding a nozzle on the left. Three thick, blue, curved lines arch from the nozzle towards the right, representing water spray. To the right of these lines, the text "Mobile Irrigation Lab" is written in a bold, dark green, sans-serif font.

Mobile Irrigation Lab



About the Mobile Irrigation Lab (MIL)

Free irrigation evaluations

- Butte, Glenn, Tehama, Shasta Counties
- New MIL in Yolo

Provide comprehensive irrigation information to growers

- Customized report that is 'snapshot' of system
- Measure DU and application rate (in/hr)
- Current system performance Vs. design capacity
- Provide tips and recommendations



Cost of the MIL

Free service funded by grants

- 2023 Almond Board of California
- Job Training Center (intern)

Previous funding sources

- DWR
- NRCS
- Shasta College
- Local irrigation districts
- CDFA

Upcoming funding (hopefully)

- CDFA WETA
- DWR NSV IRWM



Distribution Uniformity - DU

- A measure of how even an irrigation system applies water to an area
- Close to 100% is the goal
- Lower DU =
 - Less efficient distribution
 - More water applied to meet the minimums
 - Increased water and pump use

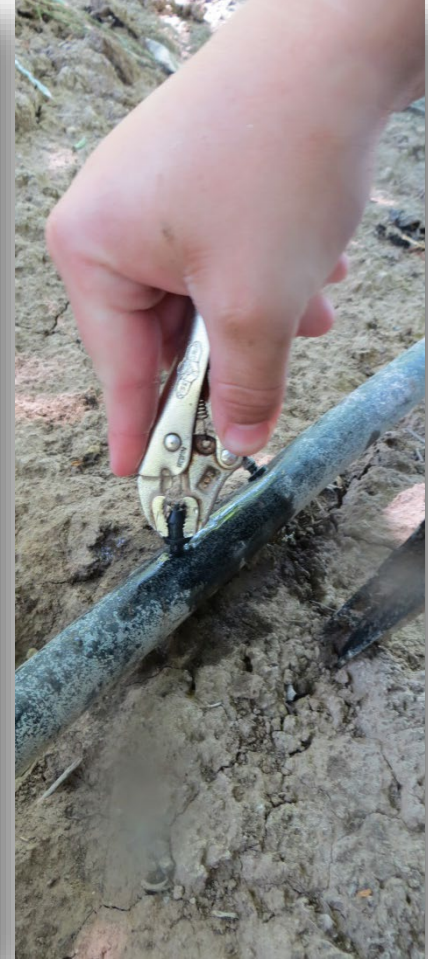


How It Works

- Sign up
- Growers contacted for scheduling
 - April - September
- Provide system details
 - Irrigation design plans, system layout
- Evaluations take 2 to 3 hours each
- Reports returned 4 to 8 weeks



Pressure Testing



Measuring Flow Rates



Test sprinklers/emitters in high & low psi areas



System details – Netafim Supernet Jr. Micros with blue nozzles and 25 psi regulators

Pressure changes flow rates!

Enter ml's caught: **Pressure=20** **Location # 1**

290	The flow rate for emitter #	1	was	9.19 gph.
292	The flow rate for emitter #	2	was	9.26 gph.
295	The flow rate for emitter #	3	was	9.35 gph.
296	The flow rate for emitter #	4	was	9.38 gph.
296	The flow rate for emitter #	5	was	9.38 gph.
298	The flow rate for emitter #	6	was	9.45 gph.
299	The flow rate for emitter #	7	was	9.48 gph.
300	The flow rate for emitter #	8	was	9.51 gph.
300	The flow rate for emitter #	9	was	9.51 gph.
300	The flow rate for emitter #	10	was	9.51 gph.
305	The flow rate for emitter #	11	was	9.67 gph.
305	The flow rate for emitter #	12	was	9.67 gph.
305	The flow rate for emitter #	13	was	9.67 gph.
308	The flow rate for emitter #	14	was	9.76 gph.
310	The flow rate for emitter #	15	was	9.83 gph.
320	The flow rate for emitter #	16	was	10.14 gph.

The average flow rate was **9.55 gph.**
 The average application rate was **0.031 in/hr.**

The Flow DU for this location was **97.36 %**

Enter ml's caught: **Pressure= 16** **Location # 2**

260	The flow rate for emitter #	1	was	8.24 gph.
265	The flow rate for emitter #	2	was	8.40 gph.
265	The flow rate for emitter #	3	was	8.40 gph.
268	The flow rate for emitter #	4	was	8.50 gph.
268	The flow rate for emitter #	5	was	8.50 gph.
270	The flow rate for emitter #	6	was	8.56 gph.
270	The flow rate for emitter #	7	was	8.56 gph.
272	The flow rate for emitter #	8	was	8.62 gph.
272	The flow rate for emitter #	9	was	8.62 gph.
275	The flow rate for emitter #	10	was	8.72 gph.
275	The flow rate for emitter #	11	was	8.72 gph.
275	The flow rate for emitter #	12	was	8.72 gph.
280	The flow rate for emitter #	13	was	8.88 gph.
280	The flow rate for emitter #	14	was	8.88 gph.
290	The flow rate for emitter #	15	was	9.19 gph.
300	The flow rate for emitter #	16	was	9.51 gph.

The average flow rate was **8.69 gph.**
 The average application rate was **0.028 in/hr.**

The Flow DU for this location was **96.51 %**

Enter ml's caught: **Pressure=13** **Location # 3**

200	The flow rate for emitter #	1	was	6.34 gph.	The a
210	The flow rate for emitter #	2	was	6.66 gph.	The a
215	The flow rate for emitter #	3	was	6.82 gph.	The a
215	The flow rate for emitter #	4	was	6.82 gph.	The a
220	The flow rate for emitter #	5	was	6.97 gph.	The a
220	The flow rate for emitter #	6	was	6.97 gph.	The a
225	The flow rate for emitter #	7	was	7.13 gph.	The a
225	The flow rate for emitter #	8	was	7.13 gph.	The a
225	The flow rate for emitter #	9	was	7.13 gph.	The a
230	The flow rate for emitter #	10	was	7.29 gph.	The a
230	The flow rate for emitter #	11	was	7.29 gph.	The a
233	The flow rate for emitter #	12	was	7.39 gph.	The a
235	The flow rate for emitter #	13	was	7.45 gph.	The a
236	The flow rate for emitter #	14	was	7.48 gph.	The a
238	The flow rate for emitter #	15	was	7.54 gph.	The a
240	The flow rate for emitter #	16	was	7.61 gph.	The a
240	The flow rate for emitter #	17	was	7.61 gph.	The a
240	The flow rate for emitter #	18	was	7.61 gph.	The a
242	The flow rate for emitter #	19	was	7.67 gph.	The a
243	The flow rate for emitter #	20	was	7.70 gph.	The a
245	The flow rate for emitter #	21	was	7.77 gph.	The a
246	The flow rate for emitter #	22	was	7.80 gph.	The a
248	The flow rate for emitter #	23	was	7.86 gph.	The a
260	The flow rate for emitter #	24	was	8.24 gph.	The a
265	The flow rate for emitter #	25	was	8.40 gph.	The a
275	The flow rate for emitter #	26	was	8.72 gph.	The a
280	The flow rate for emitter #	27	was	8.88 gph.	The a
300	The flow rate for emitter #	28	was	9.51 gph.	The a

The average flow rate was **7.56 gph.**
 The average application rate was **0.025 in/hr.**

The Flow DU for this location was **88.01 %**

The average flow rate for the entire system was **8.60 gph.**
 The average application rate for the system was **0.028 in/hr.**

The Overall System Flow DU was **84.53 %**

Comprehensive Inspection

- How is the hardware performing
 - Leaking and plugging
 - Valves & pressure regulators
 - Malfunctioning emitters/sprinklers
 - Sprinkler manufacturer statistics compared to collected field data



Kevin Greer

530-727-1297

kgreer@tehamacountyrca.org



See What's Possible:

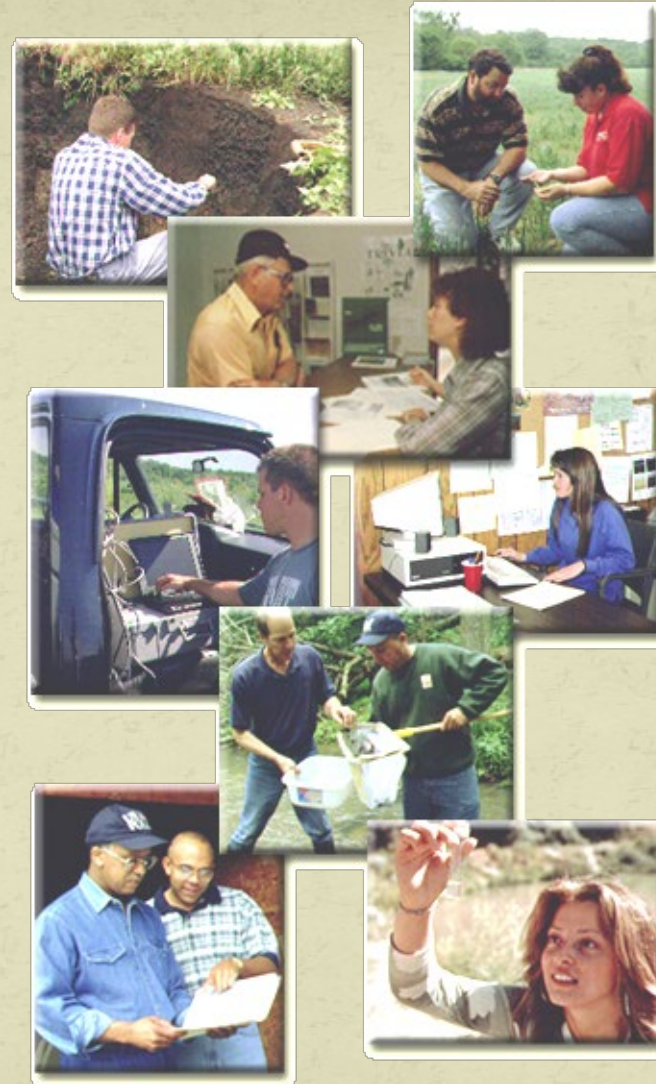
Farm Bill Conservation Programs

Opportunities for Private Landowners



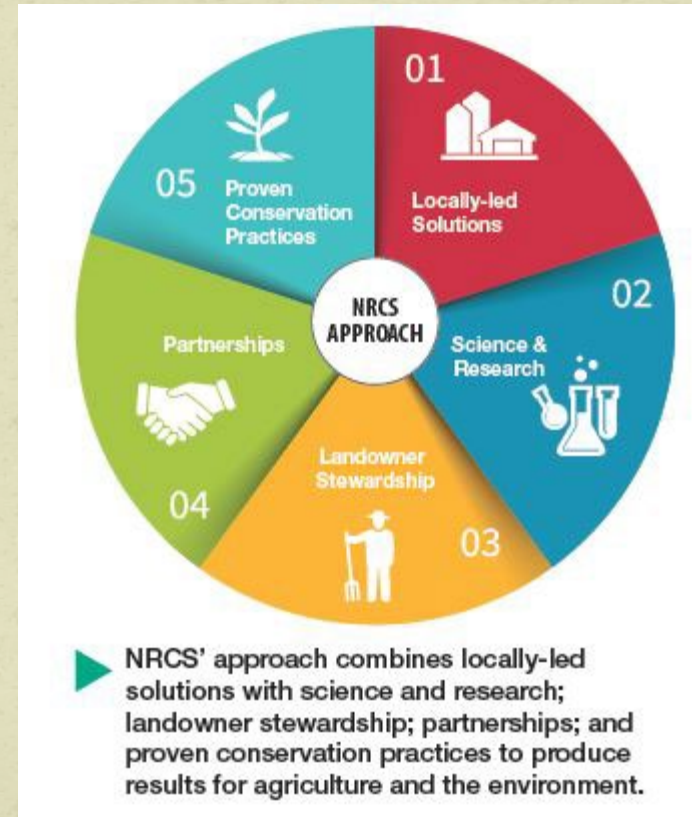
Who We Are...

*Helping People Help the
Land through voluntary
conservation*



- **NRCS Conservation Programs**

- NRCS's natural resources conservation programs help people reduce soil erosion, enhance water supplies, improve water quality, increase wildlife habitat, and reduce damages caused by floods and other natural disasters.



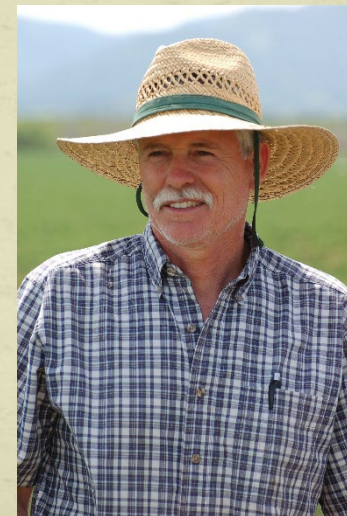
See What's Possible

- Programs address a broad range of resource concerns:
 - Soil Quality
 - Water Conservation (quality and quantity)
 - Organic transition
 - Pollinator habitat
 - Wildlife Habitat
 - Energy conservation
 - Air quality
 - Dairy water quality
 - Conservation planning
 - Forestry
 - Working landscape easement programs
 - And More!



Conservation Cost Share Environmental Quality Incentives Program (EQIP)

- Provides the broadest range of conservation program assistance to producers.



EQIP Assistance for Ranchers

- Conservation planning
- Prescribed grazing
- Range planting
- Watering facilities
- Fencing
- Brush control
- Prescribed burning
- Invasive plant control



EQIP Assistance for Farmers

- Conservation Planning
- Water Conservation
- Air Quality (National)
- Forest Management
- Air Quality (California)
- Energy Conservation
- Wildlife Habitat
- Soil Quality



EQIP

- Continuous sign up; deadlines for funding consideration each fiscal year
- Applications filed with local NRCS office
- Eligibility to Farm Service Agency (FSA) if selected
- Payments: around 50 percent of average estimated cost of installing practices (historically underserved producers: up to 75 percent)
- Payment Limitation applied to the period of FY 2019 to 2023. EQIP Payment Limitation (\$450,000)



RCPP

- Regional Conservation Partnership Program
- Extension of EQIP (same application process and payment limits)
- Priorities are specific to the RCPP agreement
 - Maximizing waterbird habitat on CA ricelands
 - Soil health management systems in Northern California



Stewardship

Conservation Stewardship Program (CSP)

- Payment incentives for practicing good stewardship
- Address resource concerns in a comprehensive manner:
 - Improving and maintaining existing activities
 - Installing additional conservation activities
- Contracts are 5 years
- Maximum payment of \$40,000/year and \$200,000 over lifetime of contract
- Continuous sign-up with periodic cut-offs for ranking



See What's Possible:

Farm Bill Conservation Programs

Opportunities for Private Landowners

For more information:

Kristin Guy, Soil Conservationist, (530) 361-3170 (Glenn County)





Un



United States Department of Agriculture



Welcome to the
Farm Service Agency

What is the Farm Service Agency

The Farm Service Agency is part of the U.S. Department of Agriculture and provides programs and loans to help farmers, ranchers and agricultural partner organizations provide food, fuel and fiber to millions of people worldwide.



Farm Programs

- ❖ Agriculture Risk Coverage (ARC) & Price Loss Coverage (PLC)
 - County ARC
 - Individual ARC
 - PLC





Farm Programs

❖ Disaster Assistance Programs

- Livestock Forage Program (LFP)
- Livestock Indemnity Program (LIP)
- Emergency Livestock Assistance Program (ELAP)
- Tree Assistance Program (TAP)
- Noninsured Crop Disaster Assistance Program (NAP)

Farm Programs

- ❖ Margin Protection Program (MPP) – Dairy
- ❖ Marketing Assistance Loans (MAL)
- ❖ Loan Deficiency Payments (LDPs)
- ❖ Farm Storage Facility Loan Program (FSFL)
- ❖ Sugar Storage Facility Loan Program (SSFL)





Conservation

- ❖ Conservation Reserve Program
 - General Sign-Up
 - Continuous Sign-Up
- ❖ Emergency Conservation Program (ECP)
- ❖ Emergency Forest Restoration Program (EFRP)

A photograph of a farm scene with several cows grazing in a green field, partially obscured by a large green curved graphic element.

Telling your story

- **You have a voice and we want to hear it.**
- There are many boards and committees that seek farmer input and perspective
- When you participate in our programs, we also want to hear from you and build a working relationship with you

FSA County Committees

- **FSA County Committees (COC)** help administer and oversee FSA programs that make a difference for farmers and ranchers in your community:
 - Represent local farmers, provide agricultural guidance and insight to county office staff, and assist with outreach to farmers, hire County Executive Directors (CED)
- More than 7,000 farmers serve on COCs
- Elections happen locally every year and elected members serve three-year terms in their Local Administrative Area (LAA). COCs meet periodically and committee members are paid a stipend and mileage reimbursement

Farm Loan Programs

FSA's loan programs are designed to help family farmers to start, purchase or expand their farming operation.

- ❖ Farm Ownership Loans (Direct & Guaranteed)
- ❖ Farm Operating Loans (Direct & Guaranteed)
 - Microloans
 - Youth Loans

A photograph of a farm scene with several cows grazing in a green field, partially obscured by a large green graphic overlay.

Farm Loan Programs

- ❖ Targeted Funds to Underserved and Beginning Farmers and Ranchers
- ❖ Down Payment Program
- ❖ Emergency Loans
- ❖ Conservation Loans
- ❖ Land Contract Guarantees



Un



United States Department of Agriculture



Farm Service Agency

For More Information Contact:

Your Local FSA County Office

www.fsa.usda.gov

Glenn County FSA

(530) 934-4601



Report

Help

Data

March 28, 2023

SIGN IN - REGISTER

Plant or Seed Mix Report

[MAP](#)

[Search Criteria](#)

36.0125, -119.6125

Practice

340 - Cover Crop

Purpose

4 - Reduce Soil Compaction

Plant Type

Cereal Grain Forb Legume Grass or Grass-like Shrub Tree

Pollinator Habitat

Native

CLEAR

SEARCH

[NRCs eVegGuide 5 \(calflora.org\)](https://www.calflora.org/nrcs/index.html)

GLENN COUNTY PARTNERS BRING YOU PROGRAMS 101 FOR FARMERS & RANCHERS

CONTACTS

Glenn County Resource Conservation District
132 N Enright Avenue, Suite C
Willows, CA
(530) 934-4601 x5

Glenn County Agriculture Department
720 N Colusa Street
Willows, CA
(530) 934-6501

Glenn County Air Pollution Control District & CUPA
720 N Colusa Street
Willows, CA
(530) 934-6500

UCCE-Glenn County
821 E South Street
Orland, CA
(530) 865-1107

USDA Natural Resources Conservation Service
132 N Enright Avenue, Suite B
Willows, CA
(530) 934-4601 x3

USDA Farm Service Agency
132 N Enright Avenue, Suite A
Willows, CA
(530) 934-4601 x2

Mobile Irrigation Lab
...Serving Glenn County
Resource Conservation District of Tehama County
(530) 727-1297

Thank you for coming!



SPONSORS

+ Grower led Soil Health
Technical Advisory